



veneer stone

INSPIRED BY NATURE, ENGINEERED BY MAN

Coastal Collection

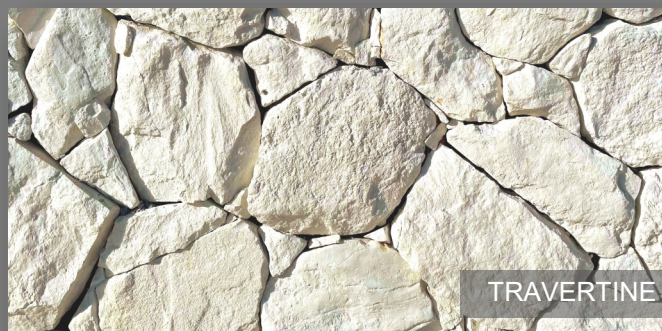
technical guide

January 2023

CHOOSE YOUR COLOUR



LIMESTONE



TRAVERTINE



SANDSTONE



NATURAL GREY



GRANITE



BASSALT



EARTH



Traditionally South Coast Limestone

DUNE



BLUESTONE

Commonly blended colours for a contrasted finish are

Limestone & Travertine - Sandstone & Natural Grey - Earth & Bluestone

The product colours in this booklet are as accurate as current photography & printing techniques allow. We suggest you look at actual samples for a better idea and selection.

COASTAL



This Architectural rustic stone reflects beauty in the randomness of each individual stone that captures the timeless character of the Australian coastline. Tight joints pieced together with painstaking precision can offer a full wall of art to compliment your home or grouting the joints gracefully compliments the distinctive textural details and provides a contemporary finish.



Dune



Granite



Limestone



Travertine

The product colours in this booklet are as accurate as current photography & printing techniques allow. We suggest you look at actual samples for a better idea and selection.

COASTAL



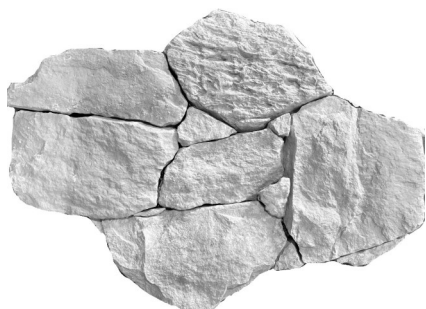
Order Multiples - Bodies

0.3m² per webbed section

18m² per pallet

Order Multiples - Corners

1.2 lineal metres per case (inc 12mm mortar joint)



Approximate size of webbed section is .3m²



Prefabricated corners
available



Limestone



Slate



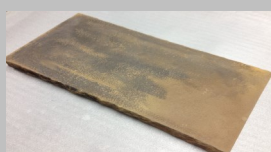
Bluestone



Sandstone



Natural Grey



Earth



Granite

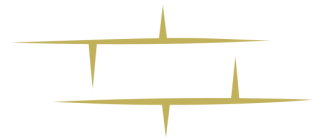


Travertine

Capping to suit each colour

Size Approx. 490-510mmL x 290mmW x 40mmH

INSTALLATION

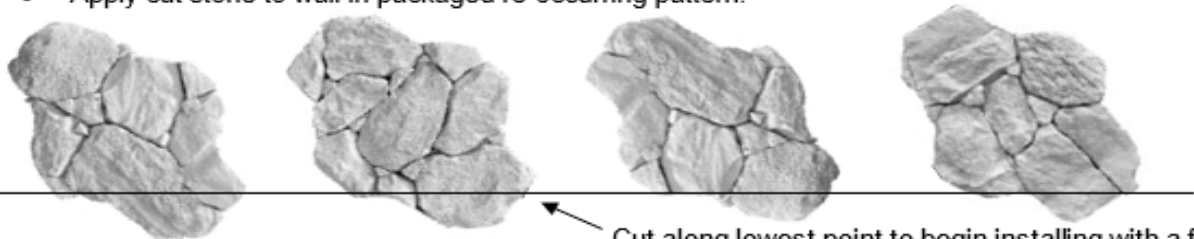


Joint Width: The Coastal collection has been designed to be installed with either a dry joint or an 8-20mm mortar/grout joint. When applying the stones use timber or plastic dowels/wedges to keep the joints evenly spaced. Due to the nature of the product stones will vary in size and may need extra wedges to allow for height variation.

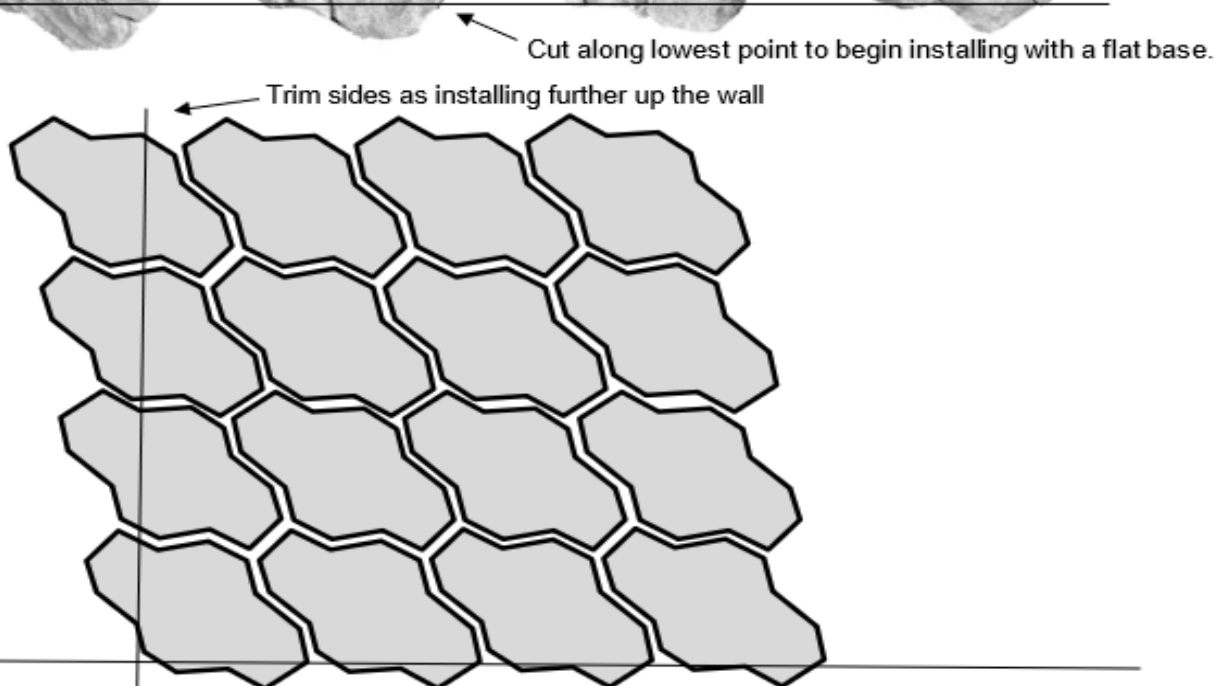
Dry joint installation tip: If installing with dry joints please ensure either the wall or adhesive are a dark colour before starting. This can be done by purchasing a dark tile adhesive or tinting mortar with black oxide (check with your local glue supplier). This will help cast a shadow between stones giving a solid dry stone look. The pattern will not line up to the millimetre, **you will need off cuts and thin cut stones to fill the voids between the stone once the pattern has been laid.**

Individual stones are held together with flexible webbing. Please specify if webbing isn't required when placing order.

- STEP 1:**
- If your application requires corners, apply these first alternating the long & short return in opposite directions
 - Cut or trim stones using a wet saw or angle grinder with a diamond blade attached.
 - Lay 1st layer of product at the base of wall in packaged re-occurring pattern.
 - Draw a straight line across the 1st layer of stones then cut
 - Apply cut stone to wall in packaged re-occurring pattern.



STEP 2:



STEP 3:

Installing with Dry joint: Take time once the pattern is laid to cut thin stones to fill small gaps between the larger joints. This is very important, it will break up the pattern and provide the perfect hand crafted stone masonry look.

Installing with Mortar joint: Sand and cement pointing mortar or tile grout can be used to fill the joints. One of the easiest & fastest ways to fill the joints is with a piping bag. Purchase your silicon piping bag from Veneer Stone by calling (02) 46312997 or email info@veneerstone.com.au

Sealing: To retain the original fresh quarried look we suggest sealing the stone with VenSeal Ultra WB. If you would like the stone to mellow slightly and gain the European look after years of harsh weathering don't seal the product.

DESIGN



UNPRECEDENTED STYLE

Contemporary & Classic

Our stunning collection of veneers are suitable for tiling over various internal and external surfaces. Both contemporary & classic designs coupled with superior craftsmanship come together to create the perfect solution for your stone walling with less impact on the environment.

ENDURING QUALITY

Perfected by nature

The harsh Australian climate only enhances the natural beauty of Veneer Stone. Unsealed, our stone simply gets better with age bringing the European look from years of weathering. To retain the fresh quarried look and enhance the natural colours seal the stone with a penetrating silicon based sealer.

TIMELESS DESIGN

Designed in Australia for Australia

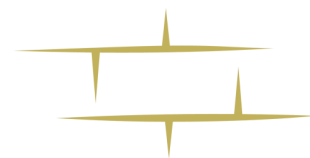
With a wide spectrum of natural colours and textures to choose from our stone tiles have been designed based on Australian styles and traditional colours from SA Limestone to the Central Coast Sandstone and Victorian Bluestone.



Engineered by man

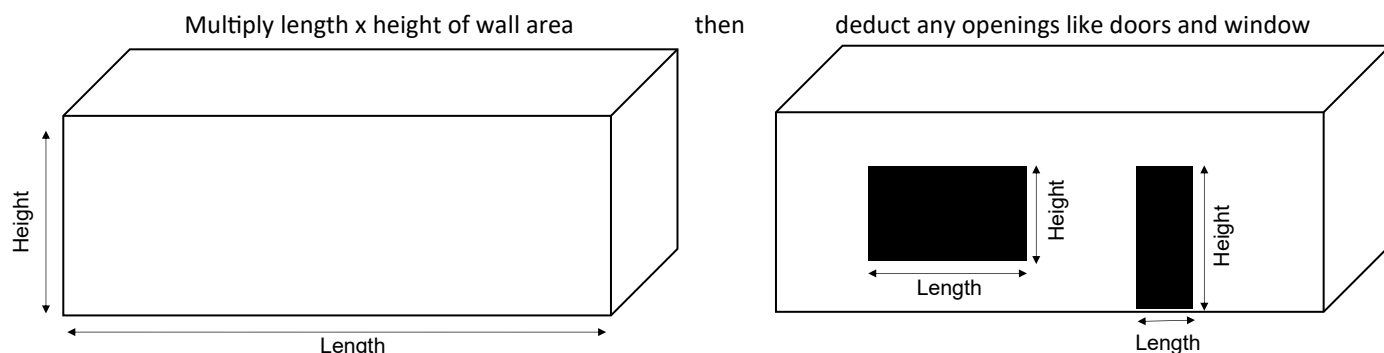
We carefully blend crushed sandstone with less than 1% natural colour pigments to create the distinctive look and relaxed feel of solid natural stone walling with a fraction of the weight. All products come in tile form and range from 20-43mm in thickness. Pre-fabricated corners and capping are available for all products and are highly recommended for use

ESTIMATING STONE REQUIRED



When installing with dry joints (dry stacked) add an extra 10-15% to allow for extra cuts and wastage.

BODIES: Calculate the total surface area by square metre



CORNERS: Calculate the lineal metres of corner stones required by measuring all external corners from top to bottom.

Please note 1 lineal metre of corners equates to approximately 0.2m² of surface area (deductible off bodies).



RANDOM SHADE VARIATION

Extreme colour and texture variation will occur from piece to piece and within each batch for a random look. The look of the final installation will be unique. Please review the range of products before making your final selection.

APPLICATION

Suitable for interior and exterior walls, Veneer Stone can be installed around fireplaces, though no closer than 20" to a naked flame. Veneer Stone can also be installed around wet areas, however, continued exposure to chlorine and other chemicals may eventually affect the colouration of the products. When frequently exposed to water, we recommend protection with VenSeal Ultra WB sealer.

WEIGHT - all weights are approximate

	Bodies	Corners
Coastal Range	50-65kg/m ²	13kg per L/M

Orders and Customer Support

Phone 02 4606 4907

Email: admin@veneerstone.com.au

Website: www.veneerstone.com.au

Facebook: <https://www.facebook.com/veneerstone/>

Instagram: <https://www.instagram.com/veneerstoneaustralia/>

NSW Plant Address: 15 Technology Drive Appin NSW

SA Warehouse: Mt Barker, Adelaide SA

VIC Warehouse: Dandenong, Melbourne VIC